

ROBIN

Cinetech
Italiana srl

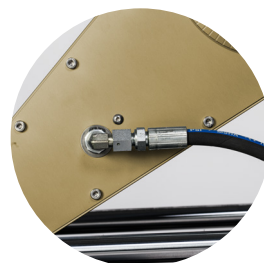


About Robin:

The idea for Robin came out as a solution to the needs of professionals who deal with different situations on set, from operating in narrow spaces to carrying the equipment up and down the stairs.

This camera dolly can be quickly assembled and disassembled, so it makes easier work on elevated surfaces like tables or small platforms by separating the hydraulic arm from the base. Moreover, this feature allows to significantly reduce the weight of the dolly for an easier transportation, keeping at the same time the reliability, silent execution and smoothness of our heavier models.

Another novelty introduced with Robin is its power supply: the switching system makes it easier to recharge the dolly, using a 28V camera battery as well as a 110V DC or a 220V DC.



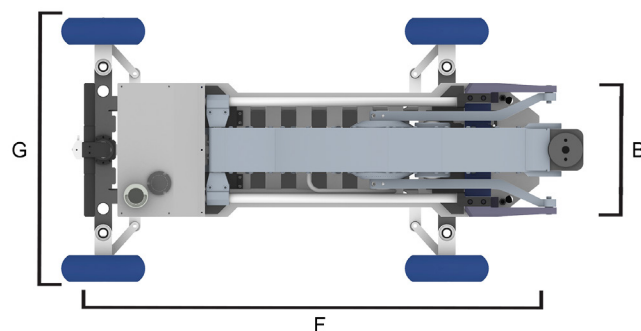
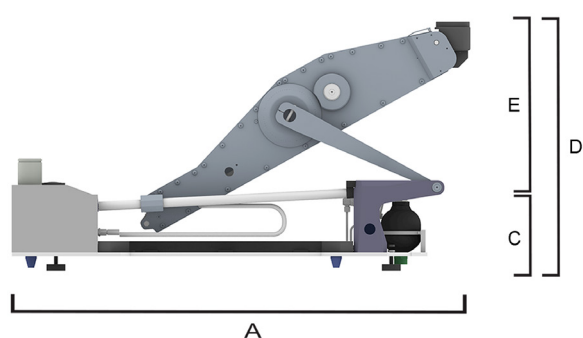
Robin accessorized and with the arm detached

SPECIFICATIONS

	Arm	Platform	Complete system
Weight (kg)	68	33	101
Length (cm)	(A) 124	(F) 125	(F) 125
Width (cm)	(B) 35	(G) 68	(G) 68
Min Height (cm)	(C) 29	-	-
Max Height (cm)	(D) 102	22	116
Arm Travel (cm)	(E) 73	-	87
Power supply (V)	220V/110V/24V	-	-
Usable track gauge (cm)	-	62	62
Lifting weight capacity on the arm (kg)	60	-	-
Precharge pressure (Bar)	90	-	-
Max working pressure (Bar)	180	-	-
Max lifts per system charge	10	-	-
Conventional	-	✓	✓
Battery powered	✓	-	✓

The platform base of our Robin dolly can be used independently from the hydraulic arm.

Various accessories for different shoot requirements, from bazooka elements to swivel with euroumount, can be put on the top of the dolly platform.



ACCESSORIES

BASIC SET

Accessories:

Basic set of accessories

Code	Description
100011	Euromount (bazooka attachment)
100015	Adjustable Seat
140018	Steering column
100019	Power supply cable

Basic set of accessories

Code	Description
100001	4-way Leveling Head
100002	6" Camera Riser
100003	12" Camera Riser
100004	Bolt & washer set
100005/CR	90° Accessory Plate dove's tail attachment
100005/CRG	90° Accessory Plate dove's tail attachment turnstyle
100005/CRG. BZK	90° Accessory Plate on Euromount
100006	Seat Riser
100010	Long camera extension
100012	Short camera extension
160012	Adapter for camera riser or LHM or LCE or SCE
180009	Skate wheels
180013	Blue wheels
140014	Swivel
140004	Central plate with Euromount
140007	Platform mode plates
140005	Side board
140010	Push bar

100011



100015



100019



140018



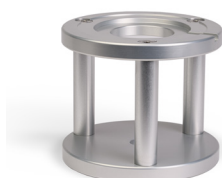
ACCESSORIES

EXTRA

100001



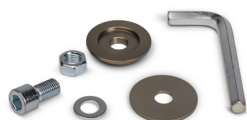
100002



100003



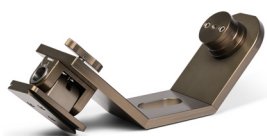
100004



100005/CR



100005/CRG



Accessories:

Basic set of accessories

Code	Description
100011	Euromount (bazooka attachment)
100015	Adjustable Seat
140018	Steering column
100019	Power supply cable

Basic set of accessories

Code	Description
100001	4-way Leveling Head
100002	6" Camera Riser
100003	12" Camera Riser
100004	Bolt & washer set
100005/CR	90° Accessory Plate dove's tail attachment
100005/CRG	90° Accessory Plate dove's tail attachment turnstyle
100005/CRG. BZK	90° Accessory Plate on Euromount
100006	Seat Riser
100010	Long camera extention
100012	Short camera extention
160012	Adapter for camera riser or LHM or LCE or SCE
180009	Skate wheels
180013	Blue wheels
140014	Swivel
140004	Central plate with Euromount
140007	Platform mode plates
140005	Side board
140010	Push bar

100005/CRG.BZK



100006



100010



100012



160012



180009



180013



140014



140004



140007



140005



140010





Cinetech Italiana S.r.l.
Via del Casale Ferranti, 27/29
00173 - Rome, Italy

Phone: +39 06 721 1804
Fax: +39 06 722 2157
E-mail: falcon@cinetech.it

www.cinetech.it